

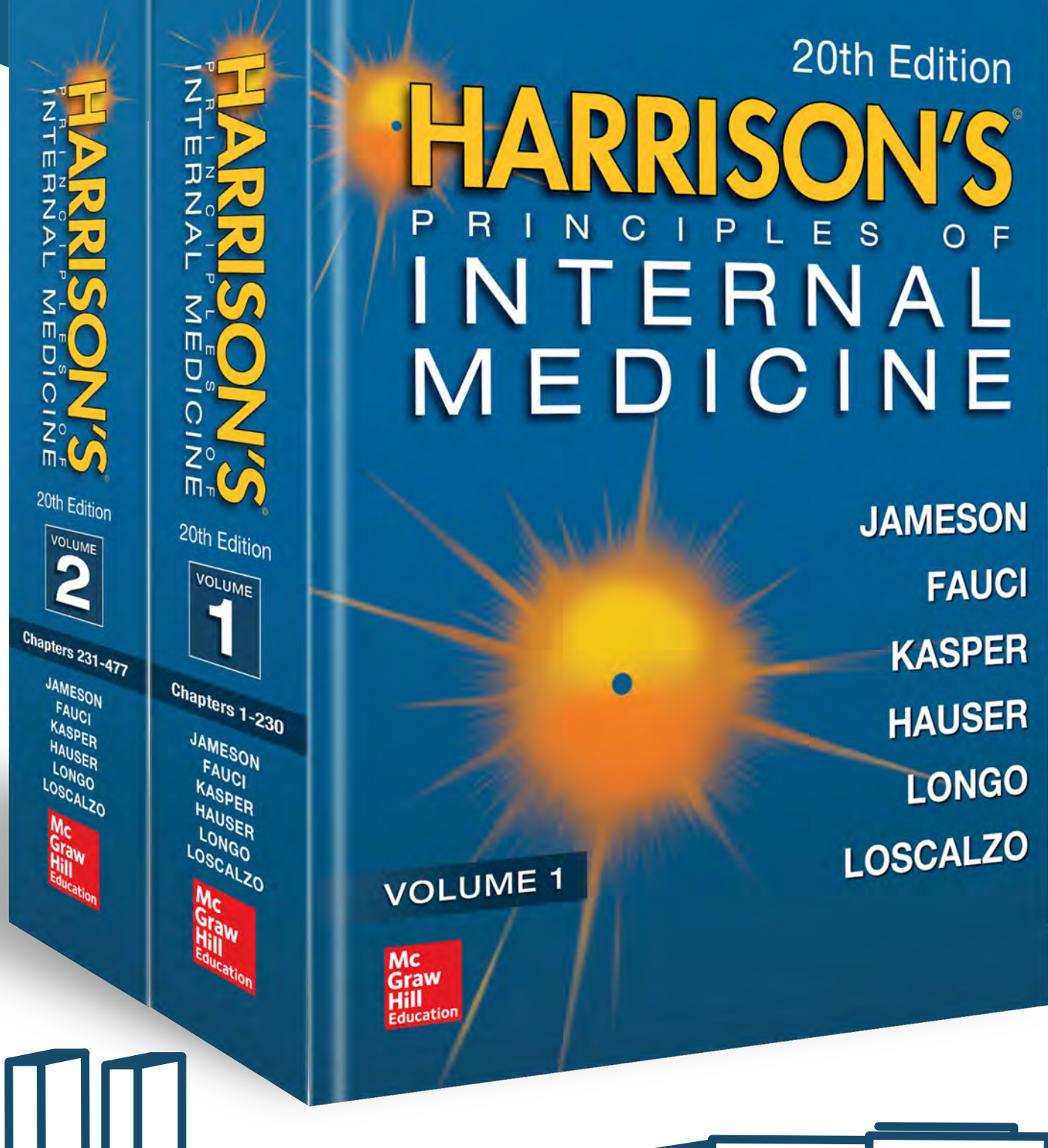
# HARRISON'S

PRINCIPLES OF INTERNAL MEDICINE 20th Edition

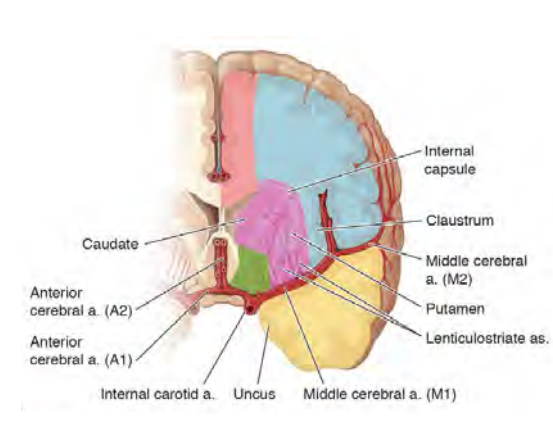
## MASTER MODERN MEDICINE

THE LANDMARK  
**20th**  
EDITION

Harrison's Principles of Internal Medicine is recognized as the leading authority on applied pathophysiology and clinical medicine. The landmark 20th edition is even more relevant, giving you essential information for the best patient care.



**2 VOLUMES 6 EDITORS**

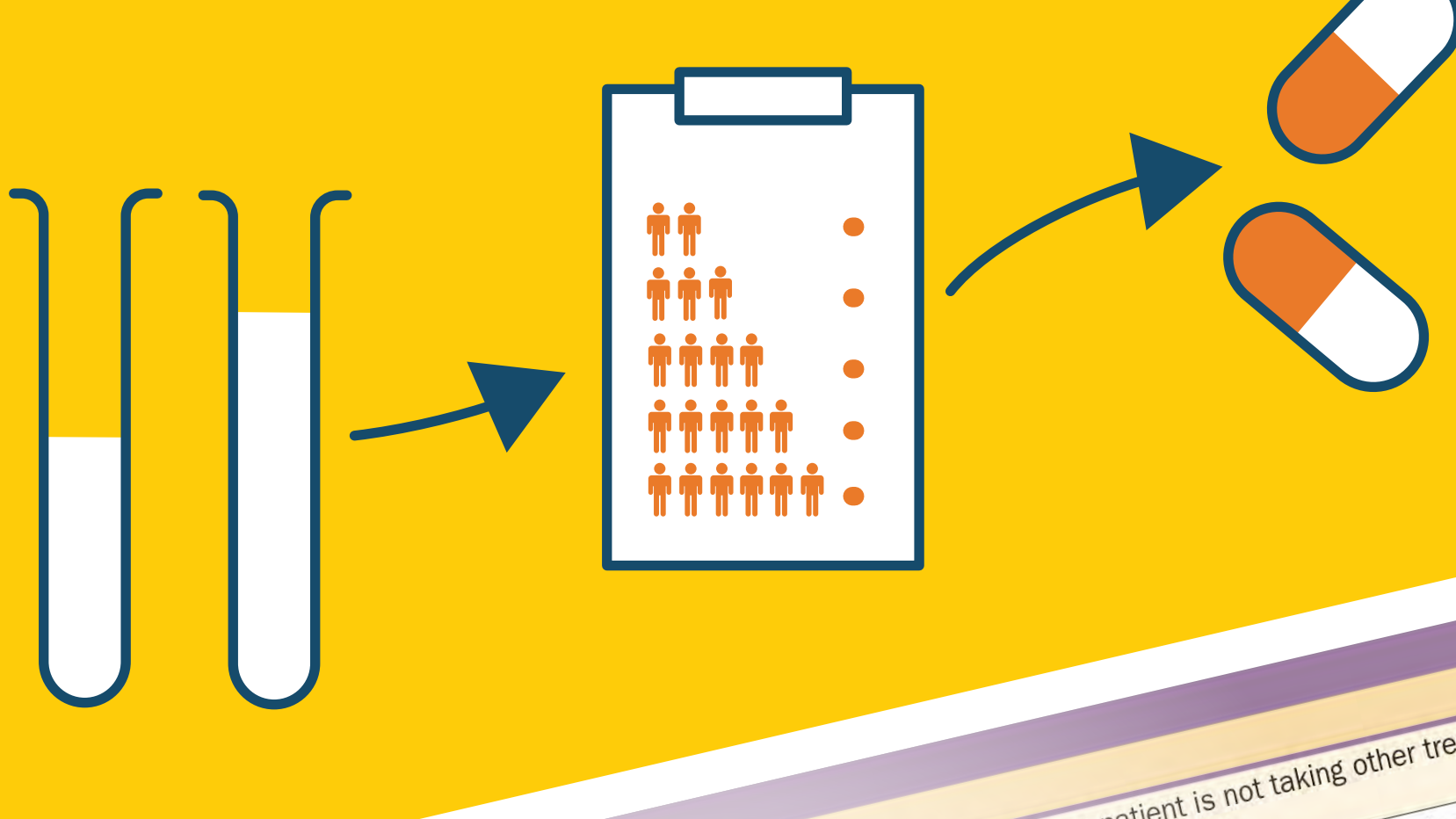


**1600**  
ILLUSTRATIONS



**4200**  
PAGES

### THE LATEST CLINICAL TRIALS RESULTS AND TREATMENT RECOMMENDATIONS

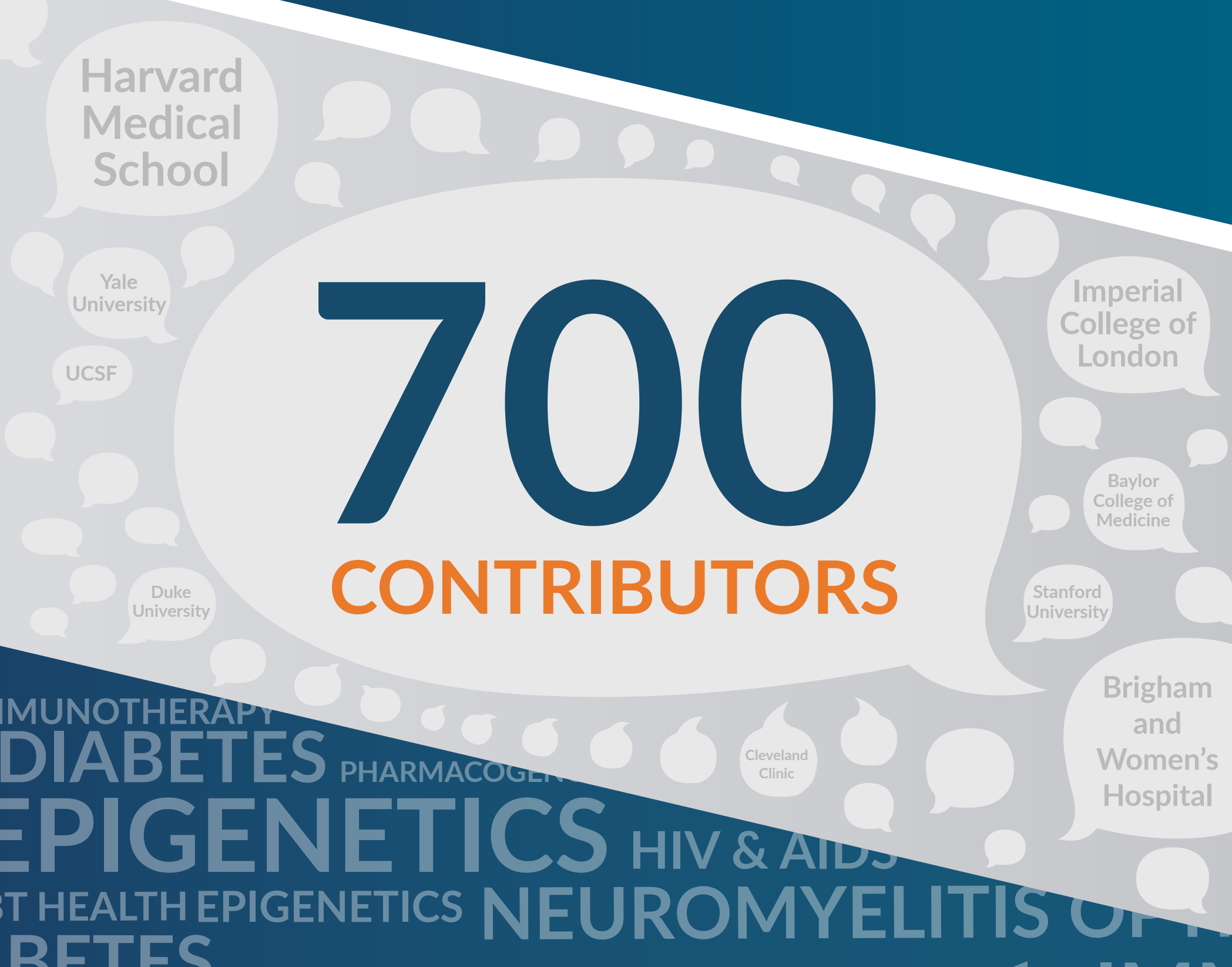


**1400**  
TABLES

-1 Pharmacologic Treatment for Osteoarthritis		COMMENTS
phen	Up to 1 g tid	Prolongs half-life of warfarin. Make sure patient is not taking other treatments containing acetaminophen to avoid hepatic toxicity.
ns and COX-2 inhibitors	375-500 mg bid 1500 mg bid 600-800 mg 3-4 times a day 100-200 mg qd	Taken with food. Increased risk of myocardial infarction and stroke for some NSAIDs containing acetaminophen. High rates of gastrointestinal side effects, including bleeding, when taken with aspirin or misoprostol. Patients at high risk for gastrointestinal side effects should avoid NSAIDs. There is an increase in bleeding when taken with acetylsalicylic acid. Can cause renal insufficiency.
profen	4 g qid (for knees, hands)	Common side effects include dizziness, sedation, nausea or vomiting, dry mouth, constipation, urinary retention, and pruritus. Respiratory and central nervous system depression can occur.
ecoxib	Various	Can irritate mucous membranes.
al NSAIDs		
ofenac Na 1% gel		
ates	0.025-0.075% cream 3-4 times a day	
capsaicin		

**200** **DECISION TREES**

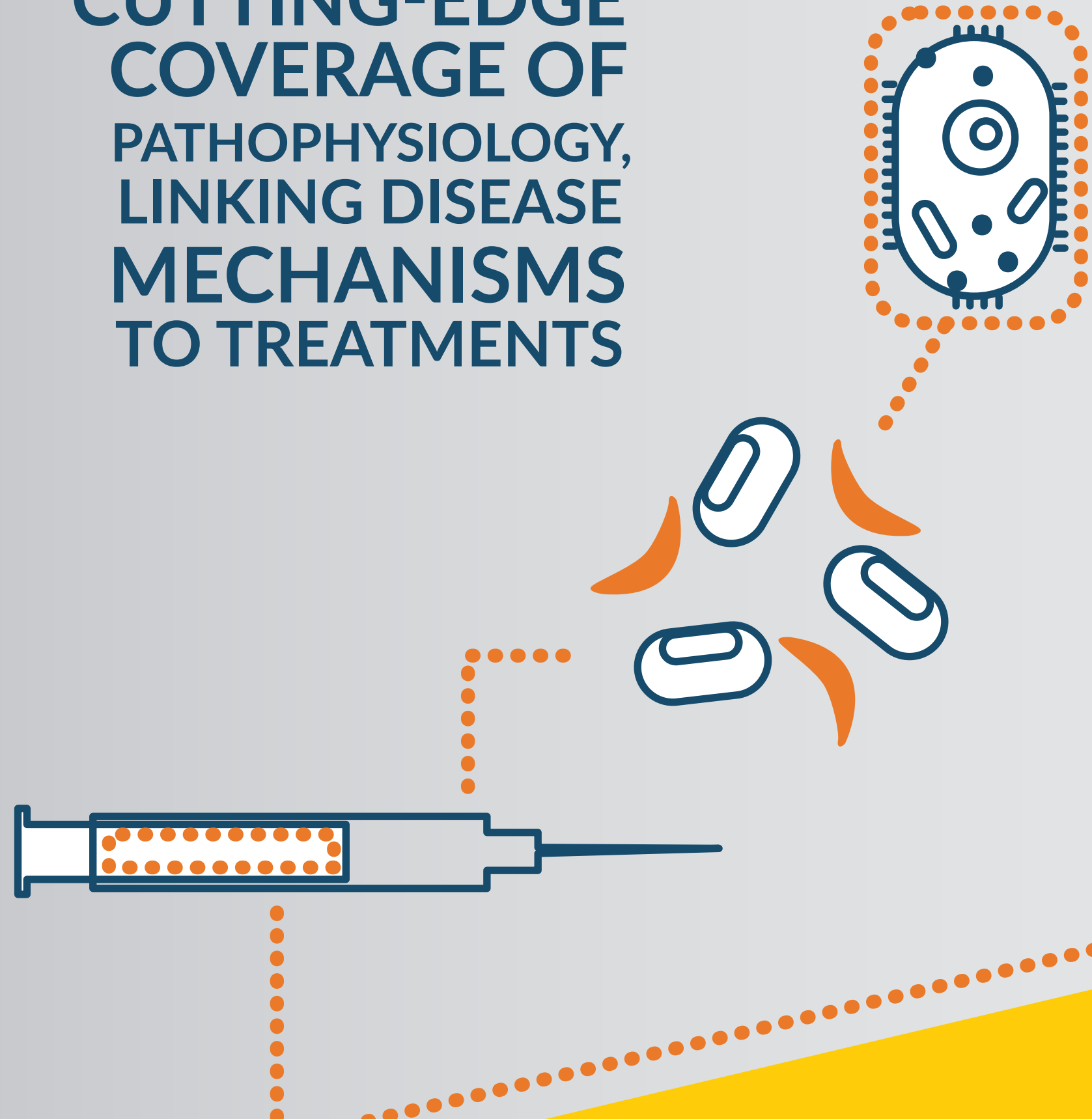
**700**  
CONTRIBUTORS



**500** **NEW & UPDATED CHAPTERS**

NEW AND UPDATED CONTENT IN GENERAL AND SPECIALTY MEDICINE

CUTTING-EDGE COVERAGE OF PATHOPHYSIOLOGY, LINKING DISEASE MECHANISMS TO TREATMENTS



SUPPORT FOR DIFFERENTIAL DIAGNOSIS WITH **IN-DEPTH** EXPLANATIONS OF THE CAUSES OF SYMPTOMS

Find out more at [harrisonsim.com](http://harrisonsim.com)



**BUY NOW**